

A low-angle, upward-looking photograph of three modern skyscrapers. The buildings are constructed with a grid of windows and dark structural elements. The sky is a pale, overcast blue with soft, wispy clouds. The perspective creates a sense of height and scale.

31w52



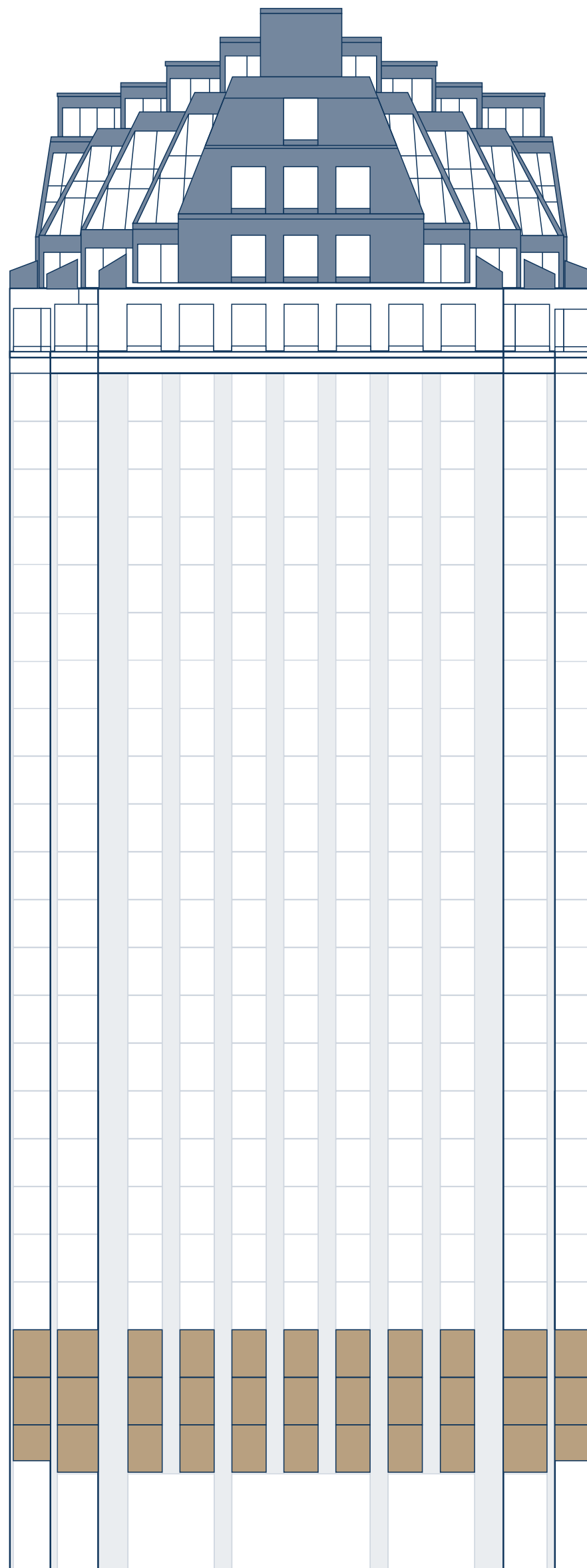
# AN ADDRESS DEFINED BY DISTINCTION

Elevate your workspace at 31 West 52nd Street, a 29-story office tower offering a refined environment in the heart of Midtown. This premier address presents sweeping city views, distinguished interiors, high-quality architecture, and seamless access, effortlessly balancing prestige and connectivity.

31 West 52nd is operated by Paramount Group to the highest standards, delivering a workplace that thoughtfully balances convenience and care. Like all tenants of Paramount, those who office at 31 West 52nd enjoy exclusive access to the Paramount Club, conveniently located across Sixth Avenue on 52nd Street.







— 4th Floor 39,862 RSF  
— 3rd Floor 39,808 RSF  
— 2nd Floor 26,490 RSF

# OPPORTUNITIES FOR EVERY NEED

100K+ SF  
available

HIGH CEILINGS  
12'-6" - 13'-6" standard heights

NEW FLOOR-TO-CEILING WINDOWS

PARKING GARAGE  
in-building access

SUSTAINABILITY  
LEED Gold; Fitwel certified;  
enhanced indoor environmental quality;  
renewable energy procurement

IN GOOD COMPANY



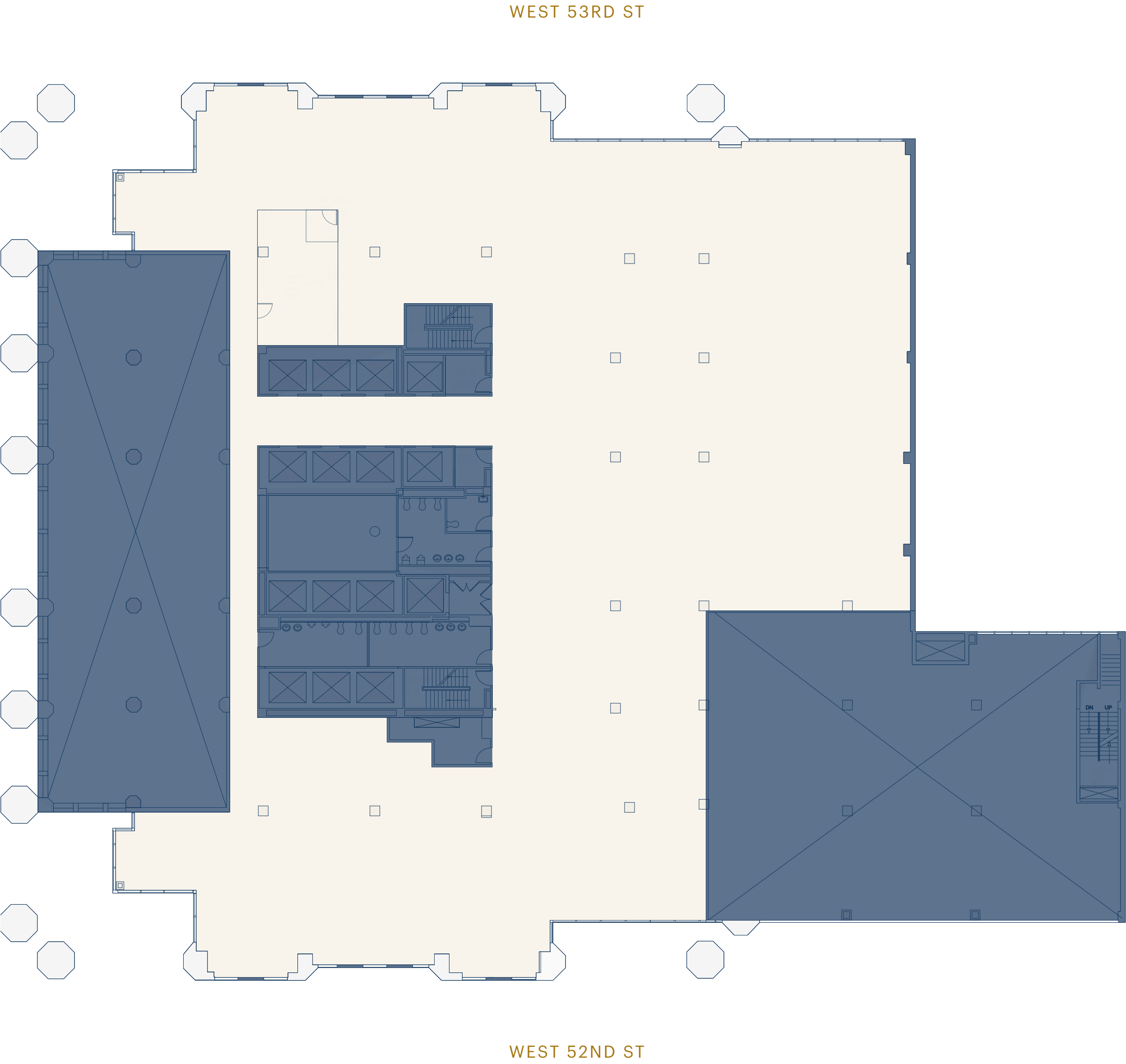
CENTER|VIEW PARTNERS



WILSON  
SONSINI

# FLOOR 2 CORE & SHELL

APPROX. 26,000 RSF

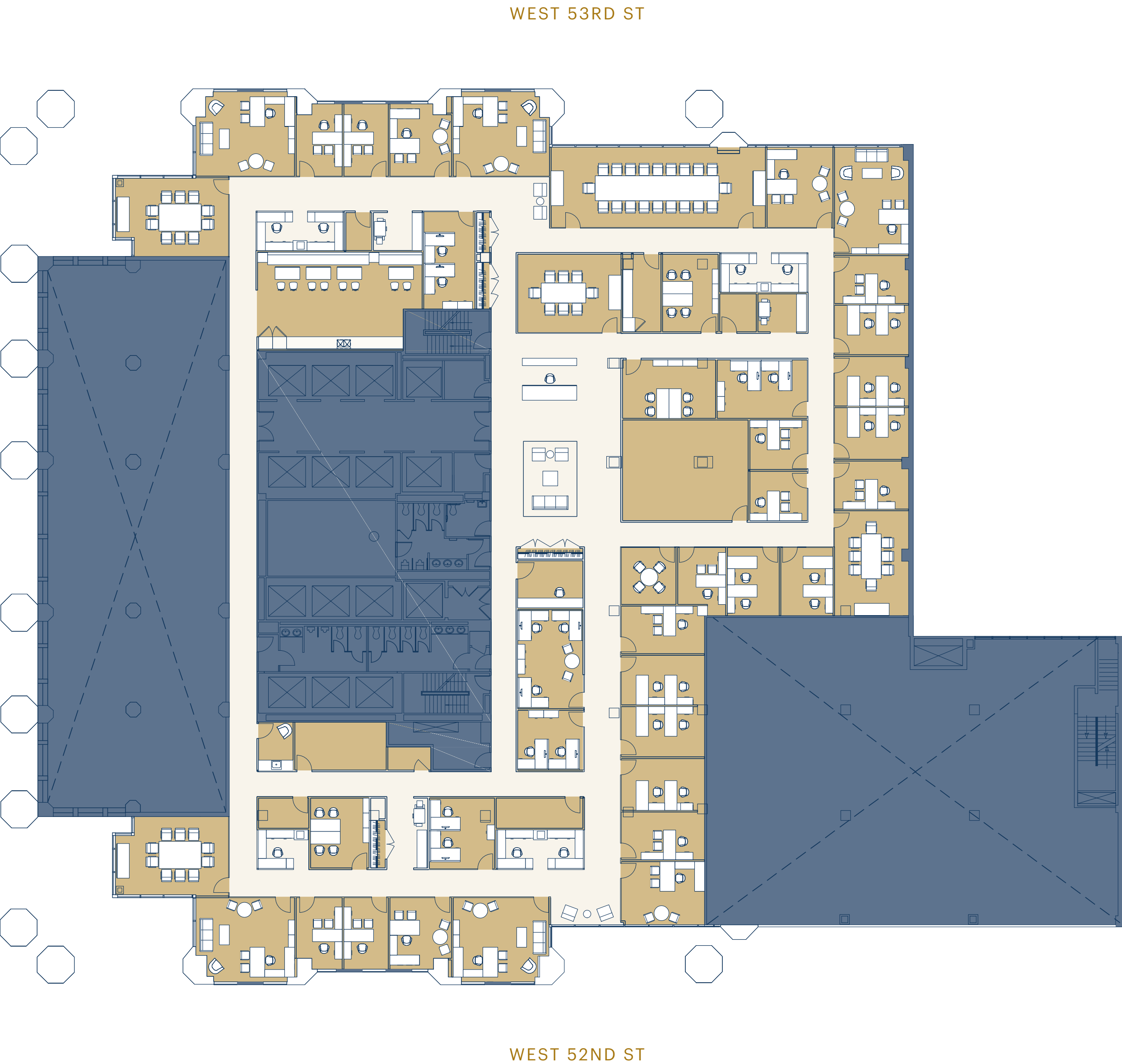




# FLOOR 2 TEST FIT: OFFICE INTENSIVE

APPROX. 26,000 RSF  
260 RSF / SEAT

Offices	45
Workstations	60
Other	1 – 2
Total Seat Count	105 – 110
Open / Closed	55% : 45%
Enclosed Collaboration Seats	90 – 95
Open Collaboration Seats	20
Total Collaboration Seats	110 –115
Collaboration Ratio/Seat	1.0 : 1

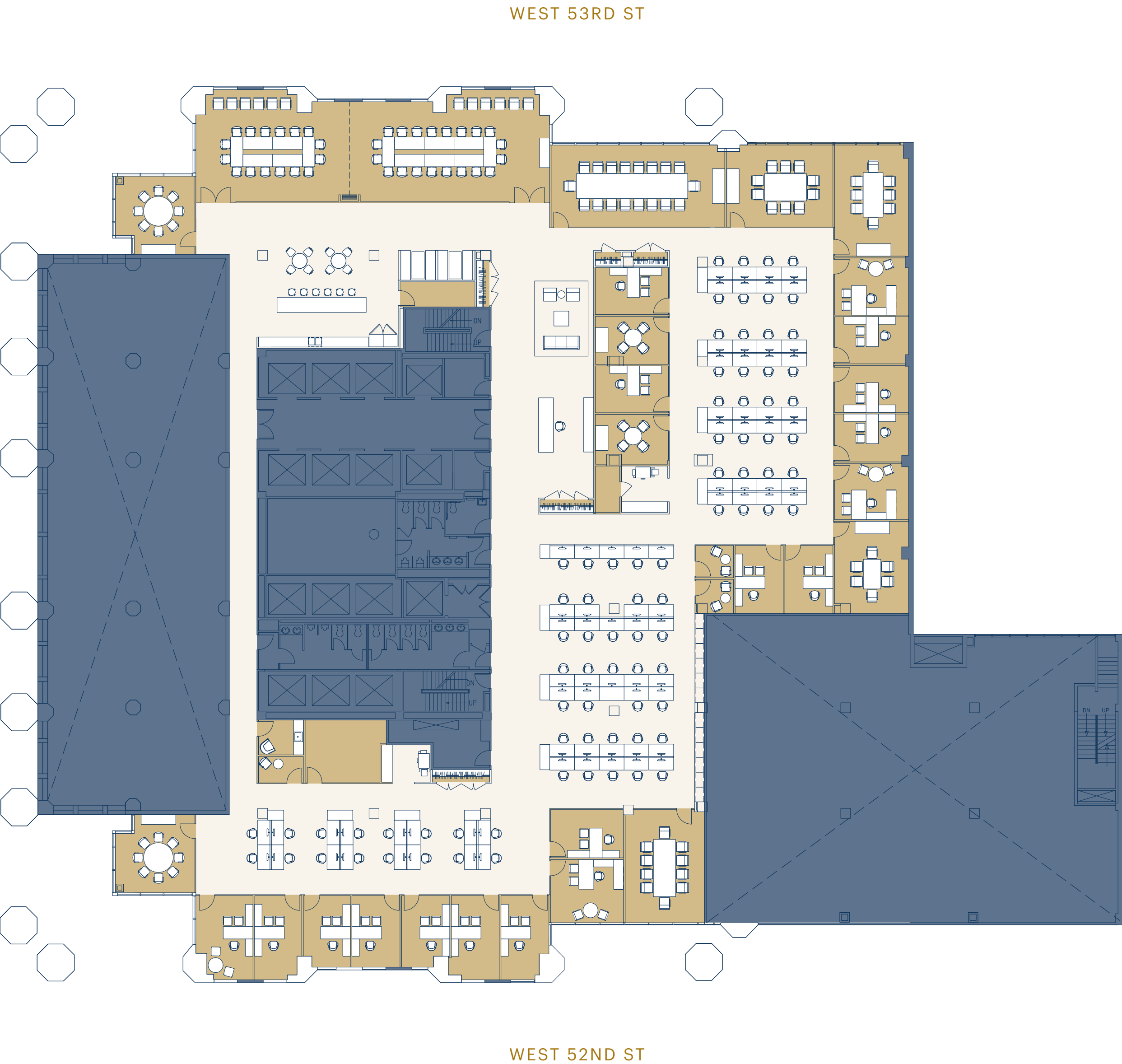




# FLOOR 2 TEST FIT: OPEN OFFICE

APPROX. 26,000 RSF  
302 RSF / SEAT

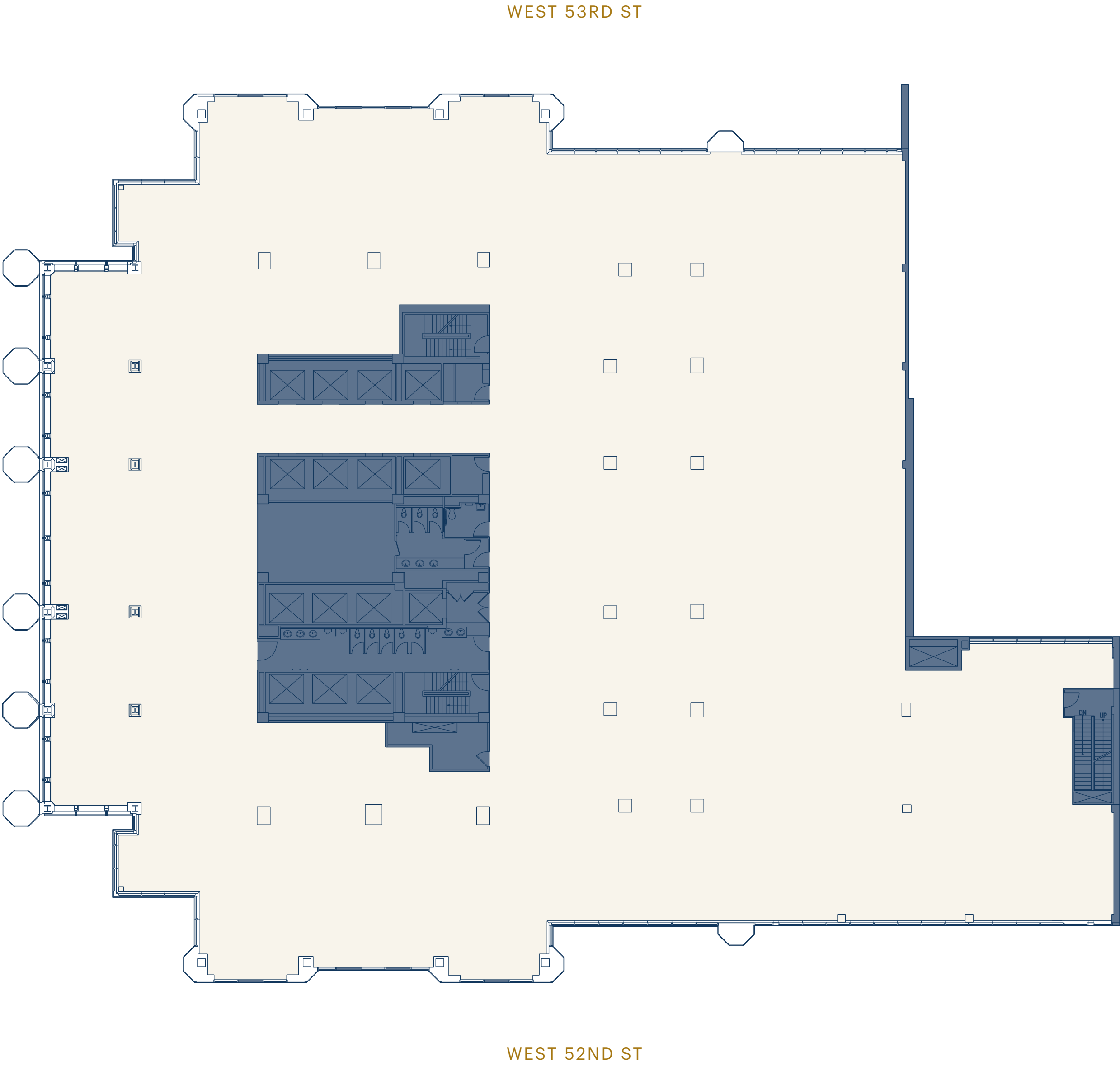
Offices	14
Workstations	81
Other	1
Total Seat Count	96 – 100
Open / Closed	84% : 16%
Enclosed Collaboration Seats	117
Open Collaboration Seats	22
Total Collaboration Seats	139
Collaboration Ratio/Seat	1.39 : 1





# FLOORS 3 & 4 CORE & SHELL

APPROX. 39,800 RSF

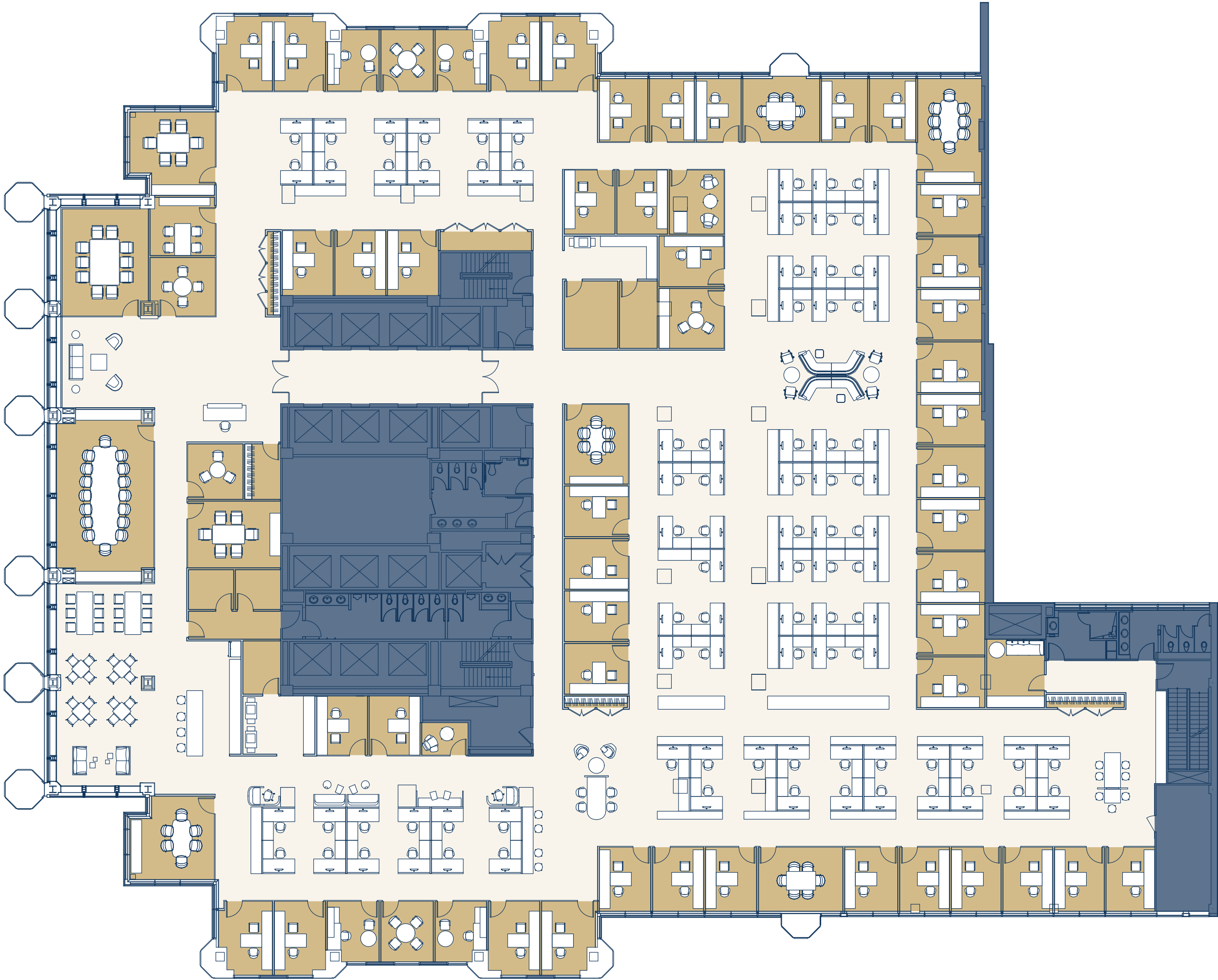
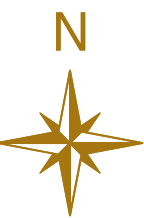




# FLOORS 3 & 4 TEST FIT: OFFICE INTENSIVE

APPROX. 39,800 RSF  
302 RSF / SEAT

Offices	48
Workstations	83
Other	1
Total Seat Count	132
Open / Closed	64% : 36%
Enclosed Collaboration Seats	85
Open Collaboration Seats	69
Total Collaboration Seats	154
Collaboration Ratio / Seat	1.17 : 1



WEST 52ND ST



# FLOORS 3 & 4 TEST FIT: OPEN OFFICE

APPROX. 39,800 RSF  
202 RSF / SEAT

Offices	20
Workstations	176
Other	1
Total Seat Count	197
Open / Closed	90% : 10%
Enclosed Collaboration Seats	77
Open Collaboration Seats	113
Total Collaboration Seats	190



WEST 53RD ST

WEST 52ND ST





OPEN FLOORPLAN WITH SPACIOUS TRADING DESKS





KITCHEN WITH COLLABORATION SPACE





LOGGIA WITH MODERN LOUNGE SEATING





LARGE, LIGHT-FILLED LOBBY





# A PRESTIGIOUS LOCATION

31 West 52nd sits in the heart of Midtown's Plaza District. The building's design and location, just off 6th Avenue, appeal to companies seeking security and privacy. The neighborhood boasts a robust assortment of easily accessible and highly popular eateries, hotels, and fitness facilities.



# IN THE NEIGHBORHOOD

## DINING

Avra  
Barcelona Bar  
Bareburger  
Beyond Sushi  
Chop't  
Del Frisco's  
Dig  
Farmer J  
Fig & Olive  
Fogo de Chão  
Ippudo  
La Grande Boucherie  
Le Bernardin  
Le Pain Quotidien  
Melt Shop  
Nobu Fifty Seven  
Ocean Prime  
Pret a Manger  
Roast Kitchen  
Tanner Smith's  
The Little Beet  
The Meatball Shop  
The Modern  
Urbanspace

## HOTELS

Baccarat  
Carnegie Hotel Midtown  
Conrad New York  
Hilton Hotel  
1 Hotel Central Park  
The St. Regis New York  
The Plaza  
The Whitby  
Thompson Central Park  
Viceroy Hotel

## FITNESS

Crunch 54th Street  
Equinox 53rd Street  
Equinox Rockefeller  
Equinox West 50th Street

## CULTURE

Carnegie Hall  
Central Park  
Columbus Circle  
MoMA  
Radio City Music Hall  
Rockefeller Center







BACCARAT HOTEL



THE ST. REGIS NEW YORK



MOMA



CENTRAL PARK



FOGO DE CHAO





PARAMOUNT  
CLUB

# REDEFINING BUSINESS EXCELLENCE AT THE CENTER OF MIDTOWN MANHATTAN

Step into the Paramount Club and you are met with the echoes of New York's illustrious legacy, and the pulsating energy of its future. Our approach focuses on curating meaningful offerings that resonate with and empower our members – from refined dining and member events to personalized wellness, and well-appointed meeting and private event spaces. Ultimately, our commitment lies in shaping our members' professional journeys with unmatched conveniences and enriching experiences.



# CONCOURSE LEVEL PARAMOUNT CLUB

Expansive amenity center to serve the Paramount Group campus.



BOARDROOM



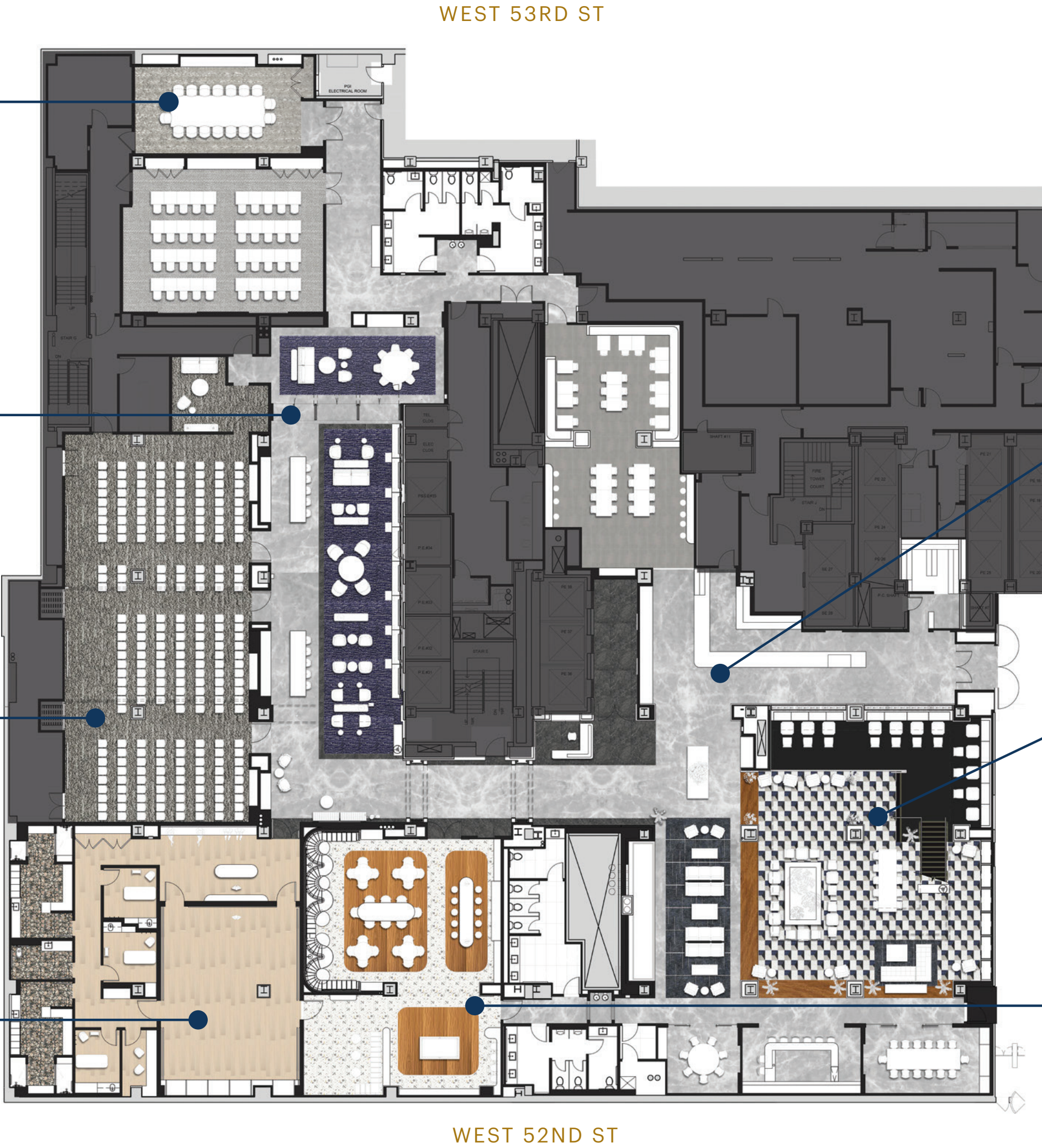
BUSINESS LOUNGE



AUDITORIUM



WELLNESS STUDIO



RECEPTION — STREET LEVEL



PARAMOUNT CAFÉ



ATRIUM



GAME ROOM





STREET LEVEL ENTRANCE TO PARAMOUNT CLUB





CONCOURSE LEVEL ATRIUM





PARAMOUNT CAFÉ





BUSINESS LOUNGE





BOARDROOM





GAME ROOM





WELLNESS STUDIO





AUDITORIUM



# ENVIRONMENTALLY CONSCIOUS & SOCIALLY RESPONSIBLE

## CERTIFICATIONS



## ENERGY

- Electricity powered by renewable resources throughout 2025
- Capital upgrades implemented to reduce energy consumption and operating expenses
- Systems equipped with automated control systems
- LED lighting systems installed throughout building common areas to increase energy efficiency
- Real-time energy management platform (iES Mach) used by Paramount's Engineering Team to monitor energy use in 5-minute intervals and respond to building conditions promptly
- Building systems commissioned to ensure performance is optimized
- Ongoing staff training to ensure operations are efficient

## HEALTH & SAFETY

- Janitorial staff conduct high frequency cleaning and sanitization using green cleaning products
- Construction materials used are LEED-compliant, recycled, responsibly sourced, and non-toxic
- Training on emergency preparedness, workplace safety, and response drills coordinated periodically

## WATER

- Existing toilets, urinals, faucets, and showers upgraded with low-flow fixtures, performing above code requirements for water conservation
- Water logs reviewed by Engineering Team to compare trends and identify potential water loss
- Cooling towers disinfected twice a year and testing for legionella bacteria conducted every 90 days

## AIR

- ActivePure air scrubbers installed, which have proven to reduce 99.99% of airborne contaminants
- Mechanical systems increase the supply of outdoor air and continuously cycle fresh, filtered air throughout the building
- Base building air quality is assured by WellStat, a monitoring system that provides real-time air quality levels that measure indicators including carbon dioxide, particulate matter, VOCs, temperature, humidity, and more
- Building staff and contractors are required to use low VOC emitting products including solvents, carpets, adhesives, paints, and coatings to maintain optimal indoor air quality



# BUILDING SPECIFICATIONS

## GENERAL DESCRIPTION

**Owner:** 40 West 53rd Associates Limited Partnership

**Managing Agent:** Paramount Group, Inc.

**Year Completed:** 1987

**Gross Building Area:** 748,411 RSF

## ORIGINAL DESIGN & CONSTRUCTION

**Architect:** Kevin Roche, John Dinkeloo & Associates

**Mechanical Engineer:** Cosentini Associates

**Structural Engineer:** Irwin Cantor Structural

**General Contractor:** Turner Construction

## CONSTRUCTION DETAILS

**Number of Floors:** 31

**Foundation:** Continuous monolithic slab poured on reinforced concrete footings.

**Frame:** Steel columns, beams

**Deck:** Q-deck and concrete floor

**Roof:** Surfaced with an IRMA system: Upper roofs installed with new 20-year warranty Cold Fluid-Applied Protection Membrane in 2009 - 31st-floor roof and Setbacks on 30th, 29th, and 26th floors.

Setback 5th floor consists of 4-ply Hot Asphalt Membrane system.

**Exterior Finish:** The facade is finished with granite stone, anodized aluminum, and glass. Dual paned ⅛” heat strengthened and ¼” tempered floor-to-ceiling windows.

**Design Loads: Live Loads**

Offices: 50 lbs/sq. ft.

Mechanical: 100 lbs/sq. ft.

**Lobby:** The lobby consists of white Gioia marble flooring, brown Kevazingo wooden walls, and a slatted ceiling with new LED lighting.

**Elevator Finishes:** Cab walls are polar white back painted glass with satin finished cladded bases.

**Ceiling Height:**

**Floor Approx. Height (Slab-to-Slab)**

First: 41 ft. 7 in.

Standard: 13 ft. 0 in. (5-28)  
13 ft. 6 in. (2&3)

Mechanical: 12 ft. 8 in. (mezz.)  
14 ft. 3 in. (29)  
21 ft. 6 in. (30th fl.)

**Mullion Spacing:** Typically 4 ft.

**Column Spacing:** Floor plates have 3 interior columns on N and S 22 ft. apart, exterior columns generally every 21 ft. - 30 ft.

## HVAC SYSTEM

**A) HVAC - (3)** Carrier electric centrifugal chillers with new Rockwell LF2 VFD’s. Fully integrated remote sub-metering, real-time IAQ monitoring, ActivePure air scrubbers treat all common areas, air handlers equipped with DDC controls & energy valves for precise pressure independent hydronic control.

**B) Heating of office space** is provided by a central hot water perimeter radiation system. The interior portion is heated and cooled by V.A.V. system perimeter CA V boxes have overhead heating coils.

Supplementary condenser water is available for tenant use provided by a separate supplemental cooling tower.

**Design Criteria:**

**Cooling: Interior Space Conditions**

76 ° F+/- 2 ° Dry Bulb 50% Relative Humidity

**Cooling: Outdoor Air Condition**

Less than 92 °F Dry Bulb or 76 ° F Wet Bulb

**Heating: Interior Space Conditions**

72 °F +/- 2 ° Dry Bulb

**Heating: Outdoor Air Condition**

Greater than 5 °F

**Equipment Rooms:** Main mechanical systems are located on the Mezzanine, 30th floors and roof.

**Standard Hours of HVAC Operation:**

Monday – Friday: 8:00 am to 6:00 pm

## ELECTRICITY

**General:** Con Edison supplies electrical power to the building. The service is designed for a demand building load of approximately 8100 KVA. The power is distributed throughout the building by means of buss duct risers. Separate cable and conduit distribution risers are provided for high-density users.

**Method of Measuring Tenant Consumption:**

Direct or by sub-meter.

**Electric Closets:** One electric closet per floor.

Poke through under floor system in place.

**Power:** Standard office floors, up to 6 watts per usable square foot.

## PASSENGER ELEVATORS

**Manufacturer:**

High-rise - OTIS Skyrise machines with OTIS B2 controllers

Low-rise - Torin machines with OTIS GCS controllers

OTIS Compass Destination Dispatch with security integration

**Number of Elevators:** 14

**Cars**

Bank A - 6 cars

Bank A - 2 cars

Bank B - 5 cars

Bank B - 1 car

**Floors Served**

Lobby, 2-17

Lobby, 2-5

Lobby, 17-29

B, Lobby, 17-29

**Elevator Capacity:** 3,500 lbs

**Elevator Speed:**

Bank A

500 FPM

Bank B

700 FPM

## SERVICE ELEVATORS

**Number of Elevators:** 4

**Cars**

Bank S - 1 Freight

Bank LD - 1 Freight

Bank L - 1 Garage

Bank C - 1 Museum Condo

**Floors Served**

B-29

CBS B-Loading Dock

B-Lobby

L2, L1, 1, 2

**Elevator Capacity:**

4,000 lbs

3,000 lbs

4,000 lbs

4,500 lbs

Freight (Bank S)

Garage (Bank L)

CBS (Bank LD)

Museum Condo (Bank C)

**Elevator Speed:**

Bank S

400 FPM

Bank LD

100 FPM

Bank L & C

125 FPM

## OTHER SYSTEMS & FACILITIES

**Fire Protection:** The building is fully sprinkled with fully compliant addressable notifier 3030 Class “E” System, with smoke purge system for tenant floors.

**Building Emergency Power:** Provided to life safety systems. All vital building and life safety systems are backed up by a diesel-powered emergency electrical generator located on the Mezzanine Floor. Size 350 kw.

**Tenant Emergency Power:** Three diesel generators in parallel (n+1) provide power to critical tenant loads. All three are located on Mezzanine Floor. Sizes: 1200kw, 1250kw, and 1250kw.

**Security:** Building security is staffed 24 hours a day, 365 days a year. Security system is supplemented by a closed circuit television system with 32 cameras positioned in public areas throughout the building.

**Energy Conservation Features:** Digital Twin provides a building operating system which integrates all data sources across the real estate SME Ecosystem. Through API integrations we have realtime HVAC and energy analytics along with on-demand work order management systems, CO2 emission reporting, and operating cost/day. Tenant experience app available through the Digital Twin in which any BACnet device can be seamlessly integrated for handheld & remote control on a personal device. New EcoStruxure BMS front end.

**Loading Deck:** Entrance is on 52nd Street. Complete loading dock facilities with three bays (one of which is shared) and one hydraulic lift.

**Parking:** 120 underground parking spaces for public use.

## TECHNOLOGY

**Internet Service Providers:** Cognet Communications Inc., Crown Communications Inc., Lumen, Pilot Fiber NY LLC, Zayo Group LLC.

**Tenant Amenity Application:** Access to exclusive deals and promotions, including amenity reservations, community and marketplace platforms, local information (news, events, and transportation), realtime building information and announcements, and work order submissions.

**Mobile Access:** Apple Wallet enabled, Bluetooth, and NFC.



# 31W52

## PARAMOUNT GROUP

Headquartered in New York City, Paramount Group, Inc. is a fully-integrated real estate investment trust that owns, operates, manages, acquires, and redevelops high-quality, Class A office properties located in select central business district submarkets of New York and San Francisco.

Paramount Group is focused on maximizing the value of its portfolio by leveraging the sought-after locations of its assets and its proven property management capabilities to attract and retain high-quality tenants.

[PGRE.COM](http://PGRE.COM)

PETER BRINDLEY  
212 237 3156  
[pbrindley@pgre.com](mailto:pbrindley@pgre.com)

DOUGLAS NEYE  
212 237 2976  
[dneye@pgre.com](mailto:dneye@pgre.com)

SEAN KIRK  
212 237 3168  
[skirk@pgre.com](mailto:skirk@pgre.com)



GUS FIELD  
212 841 5965  
[a.field@cushwake.com](mailto:a.field@cushwake.com)

RON LO RUSSO  
212 841 7979  
[ron.lorusso@cushwake.com](mailto:ron.lorusso@cushwake.com)

PIERCE HANCE  
212 841 7641  
[pierce.hance@cushwake.com](mailto:pierce.hance@cushwake.com)

CAROLINE COLLINS  
212 318 9745  
[caroline.collins@cushwake.com](mailto:caroline.collins@cushwake.com)

HENRY MOLSON  
212 841 9242  
[henry.molson@cushwake.com](mailto:henry.molson@cushwake.com)

[31W52ND.COM](http://31W52ND.COM)